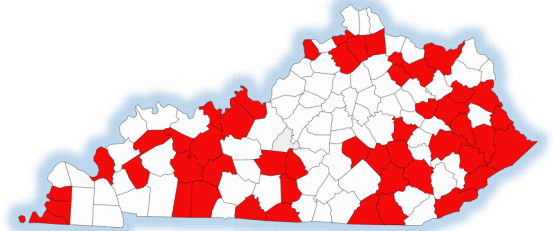


What is a Child Care Desert?

Child Care Desert is defined as more than 3 children per available child care slot in a community.

In Kentucky, **50 counties** are considered child care deserts.



Did You Know?



A married couple with an infant in a center-based child care facility in Kentucky spends **9.4%** of their annual income to pay for child care services.

Single parents pay **36%** of their income for center-based infant care in Kentucky.



On average, parents miss **9 days** of work annually due to child care-related issues.

Companies offering child care services or assistance **reduced employee absenteeism by 30%** and **decreased employee turnover up to 60%**.



How Can We Help Your Community?



Resources for Families

- Kynect and Kynectors help families apply for benefits and search for child care
- Find child care that fits a family's unique needs

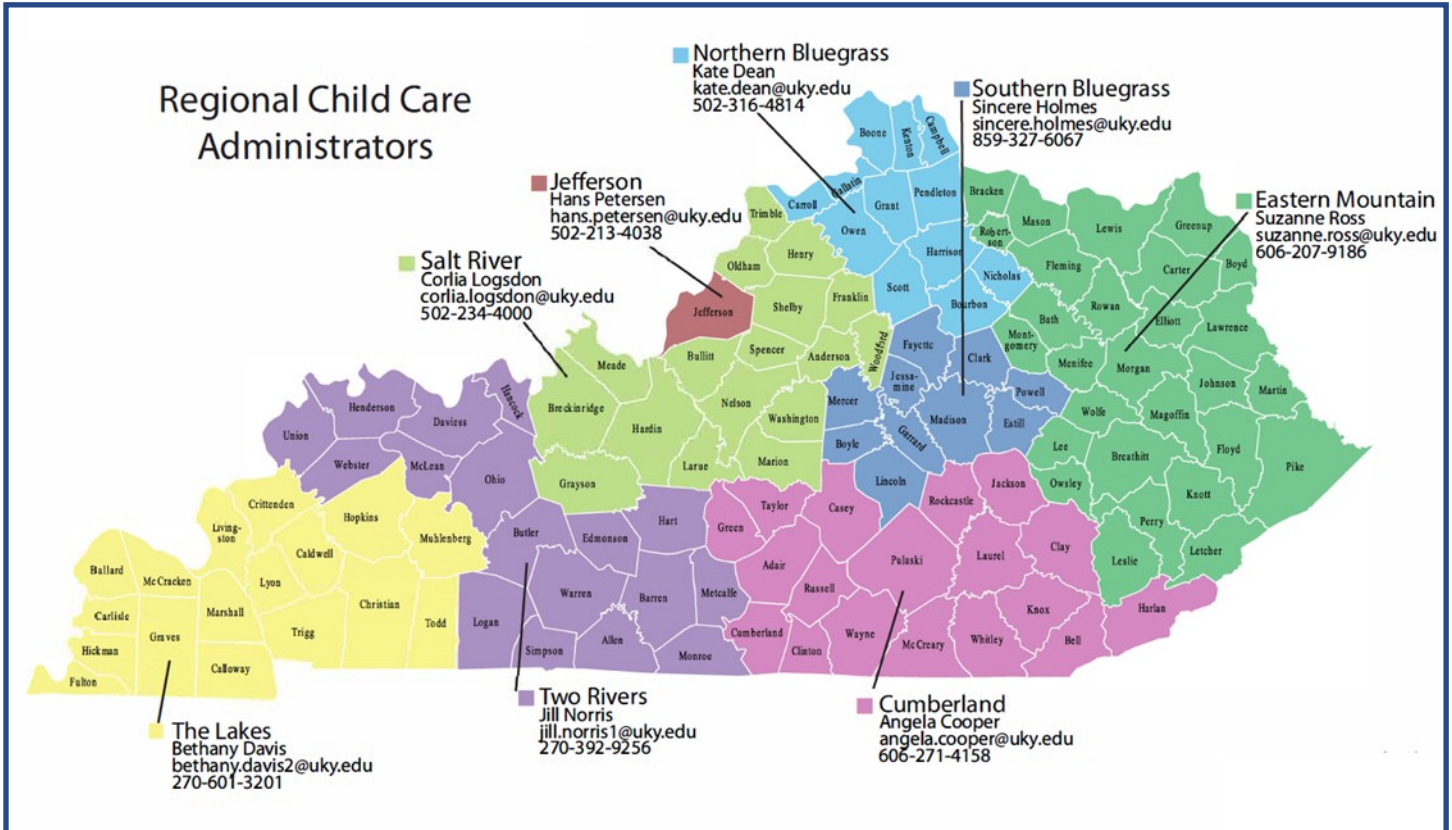


Strategic Planning and Local Partnerships

- Examine the child care landscape to identify deserts and barriers to access
- Foster innovative community partnerships to improve child care access for families

Contact Us

For additional information or support, please reach out to the Regional Child Care Administrator serving your specific county.



Connect with Us



www.childcareawareky.org