



ECE-INSIDER

Division of Child Care Provider Newsletter



From the Director's Desk

Andrea Day

At the Division of Child Care we strive to make communication efficient and effective. Please make sure you have subscribed to our DCC Listserv! To subscribe, or change your email address, please email the DCC Listserv inbox at: DCCListServ@ky.gov

Recently the Division of Childcare has sent out an update to the Interstate background check process. DCC is now responsible for requesting all interstate background checks. We hope that this added support will benefit your child care program. Please see the flow chart and if you have questions email CHFSDCCNBCP@ky.gov for assistance.



IN THIS ISSUE

[FROM THE DIRECTORS DESK](#)

[DCC BACKGROUND CHECK UPDATE](#)

[KARES REMINDERS](#)

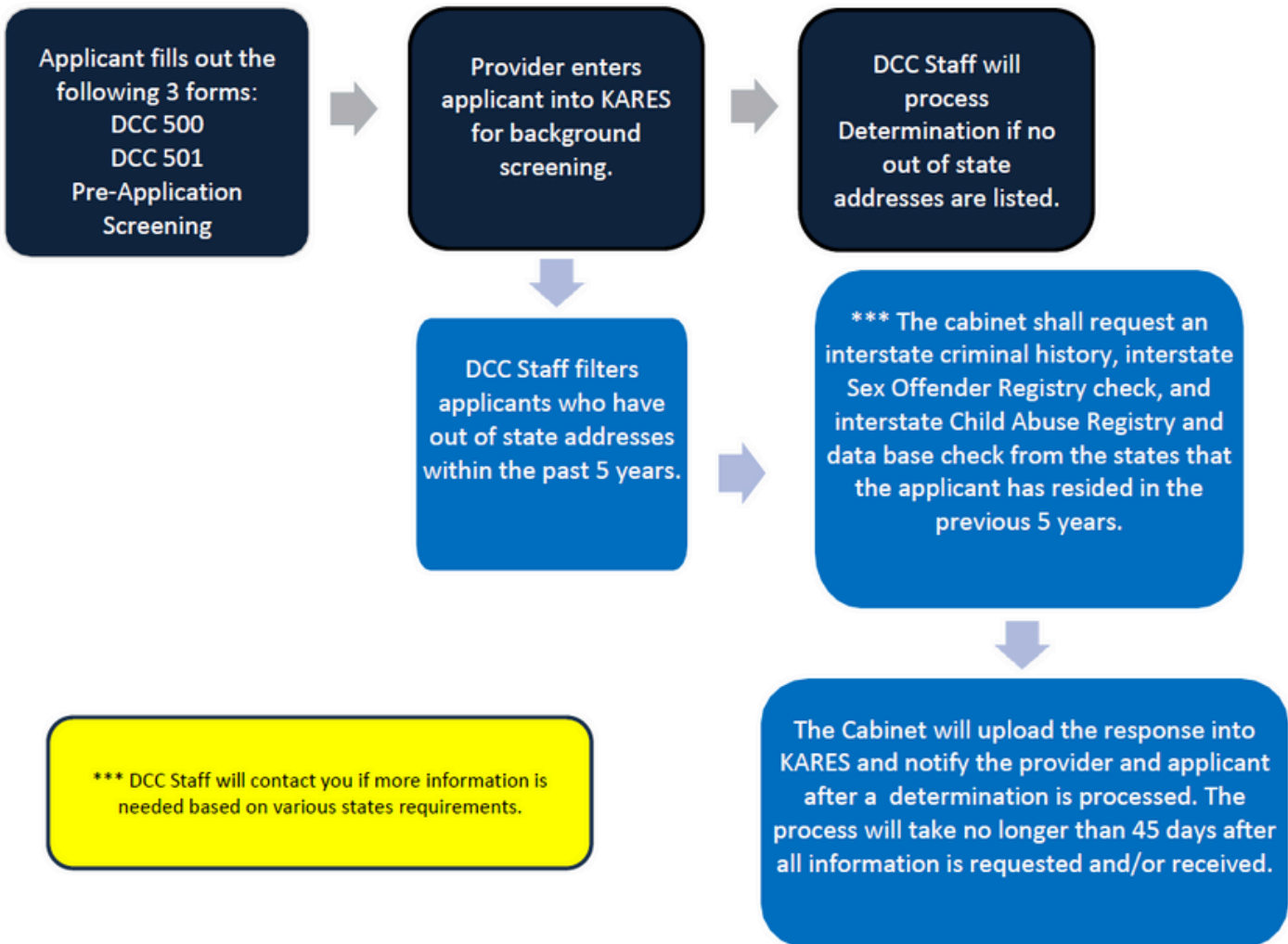
[FCCN- EXERCISE WITH YOUR CHILD WEEK](#)

[ACTIVE SUPERVISION TIPS](#)

Interstate Background Check Process Flow Chart

NEW

INTERSTATE BACKGROUND CHECK PROCESS



Employee Rosters on KARES



REMINDER

The KARES staff roster should be reviewed regularly to check for expired background checks, correctly separated employees with separation date, and the KARES wrap back feature check. In accordance with 922 KAR 2:280 Section 6, take the following actions:

- **Conduct a New Background Check:** Start a new background check for any employee with expired eligibility. Separate them from duties until the new check is completed and cleared. Once the new applicant has been deemed eligible the provider will need to “hire” the employee on the new application and “separate” them from the expired application.
- **Separate the Employee:**
 - o If the employee no longer works at the facility, please ensure they are properly separated from the KARES roster.
 - o If you have an employee that appears more than once on your roster, separate the expired application/s. (On the roster in KARES the expired applications are red and the current are green.)
- **If you are no longer in business:** please inform DCC by sending an email to the help desk at CHFSDCCNBCP@ky.gov and include the following communication:
 - o The child care facility name AND license number
 - o The facility address
 - o Your name and former position at the facility

For assistance, please contact CHFSDCCNBCP@ky.gov

JULY 2024

SUMMER

Exercise With Your Child Week!

August 4-10

This week was originally designated in 2010 to promote healthy living for families. As a child care provider, you too can contribute towards the education and practice of healthy living through exercise for the children in your care. When exercising with kids, don't think "drill sergeant"... think games! This can include something like a challenging way to transition from one area to another, for example: "While we walk to the music room, we will hop like frogs!" or "As we go to the playground, we will crab walk!" You can also include physical activity in attention-grabbing games, like Simon Says. For example: "Simon Says – do 5 jumping jacks" or "Simon Says, climb the mountain (and do mountain climbers)". During this week, you can promote special times of the day where you incorporate more intentional physical activity. You can even find short exercise videos for kids on YouTube, but be sure to verify the developmental appropriateness of the content, first. This week may be an excellent opportunity to connect with families by providing fun physical activities to do at home, or host on site at your program. Be sure that everyone stays hydrated, and mostly – has fun!

Partnering with Families

We encourage all educators to collaborate with families during National Exercise With Your Child Week. Share ideas for activities that families can do together at home. Playing outdoors, going for a family walk or bike ride, dancing to music, or participating in sports, these activities not only strengthen family bonds but also create lasting memories. Providing families with resources and information about the importance of physical activity strengthens the partnership between home and school and reinforces the value of a healthy lifestyle.



Supervision Strategies

Active supervision in a child care setting is the first step to creating a safe environment for children, families and staff. It's important to remind staff of the foundational strategies for active supervision. Each month we will explore one of the strategies in-depth from the ECLKC's active supervision resource. You can find a copy of the poster on the last page of the ECE-Insider or, [visit the site here](#).

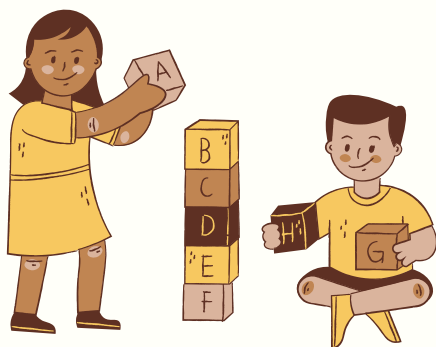
Strategy 1: Set Up the Environment

Arranging program spaces is important for accessibility, and visibility. Arrange the furniture in the room to allow you to easily supervise different centers. Minimize clutter in smaller spaces making it easier for adult supervision, and ensure open areas should have clear play space for larger group activities. You can also incorporate strategies for counting into the environment like creating colored/numbered spaces, lines, and visual attendance/reminders for headcount.

Scenario example: Maria and Yasmin signal to each other five minutes before playtime is over, then tell the children they have 5 minutes left to play. When the children have 1 minute left, Maria hands out colored circles that match colored squares painted on the grounds. The children eagerly go to their color that matches the one they were handed by Maria. This allows Maria and Yasmin to visually see which students are missing, to easily do a headcount, and to verify if children need to be ushered to their color individually.

Scenarios: <https://eclkc.ohs.acf.hhs.gov/safety-practices/article/active-supervision>

Additional Resources:



Division of Child Care

<https://www.chfs.ky.gov/agencies/dcbs/dcc/Pages/default.aspx>

Division of Regulated Child Care (DRCC)

<https://www.chfs.ky.gov/agencies/os/oig/drcc/Pages/default.aspx>

Child Care Aware Tips and Tools

<https://www.childcareawareky.org/tips-and-tools/>

Family Child Care Network

<https://www.fccnky.com/>



Active Supervision

SIX STRATEGIES TO KEEP CHILDREN SAFE

Set Up the Environment



Position Staff



Scan and Count



Listen



Anticipate Children's Behavior



Engage and Redirect



Everyone has a responsibility to keep children safe!



National Center on
Health, Behavioral Health, and Safety

Scan here to learn more
about Active Supervision.

